

Lessons learned from one of New Zealand's most challenging civil engineering projects: rebuilding the earthquake damaged pipes, roads, bridges and retaining walls in the city of Christchurch 2011 - 2016.

SCIRT presentation to Red Cross

Story: SCIRT and Red Cross Collaboration

Theme: People and Culture

A presentation which SCIRT presented to Red Cross volunteers, telling them about what SCIRT is and what it does.

This document has been provided as an example of a tool that might be useful for other organisations undertaking complex disaster recovery or infrastructure rebuild programmes.

For more information about this document, visit www.scirtlearninglegacy.org.nz



This work is licensed under a [Creative Commons Attribution 3.0 New Zealand License](#).

The authors, and Stronger Christchurch Infrastructure Rebuild Team (SCIRT) have taken all reasonable care to ensure the accuracy of the information supplied in this legacy document. However, neither the authors nor SCIRT, warrant that the information contained in this legacy document will be complete or free of errors or inaccuracies. By using this legacy document you accept all liability arising from your use of it. Neither the authors nor SCIRT, will be liable for any loss or damage suffered by any person arising from the use of this legacy document, however caused.

SCIRT PRESENTATION TO RED CROSS

HANNAH SEELEY AND KRISTIN SIMONSON
11 JUNE 2015



New Zealand Government



Who is SCIRT?



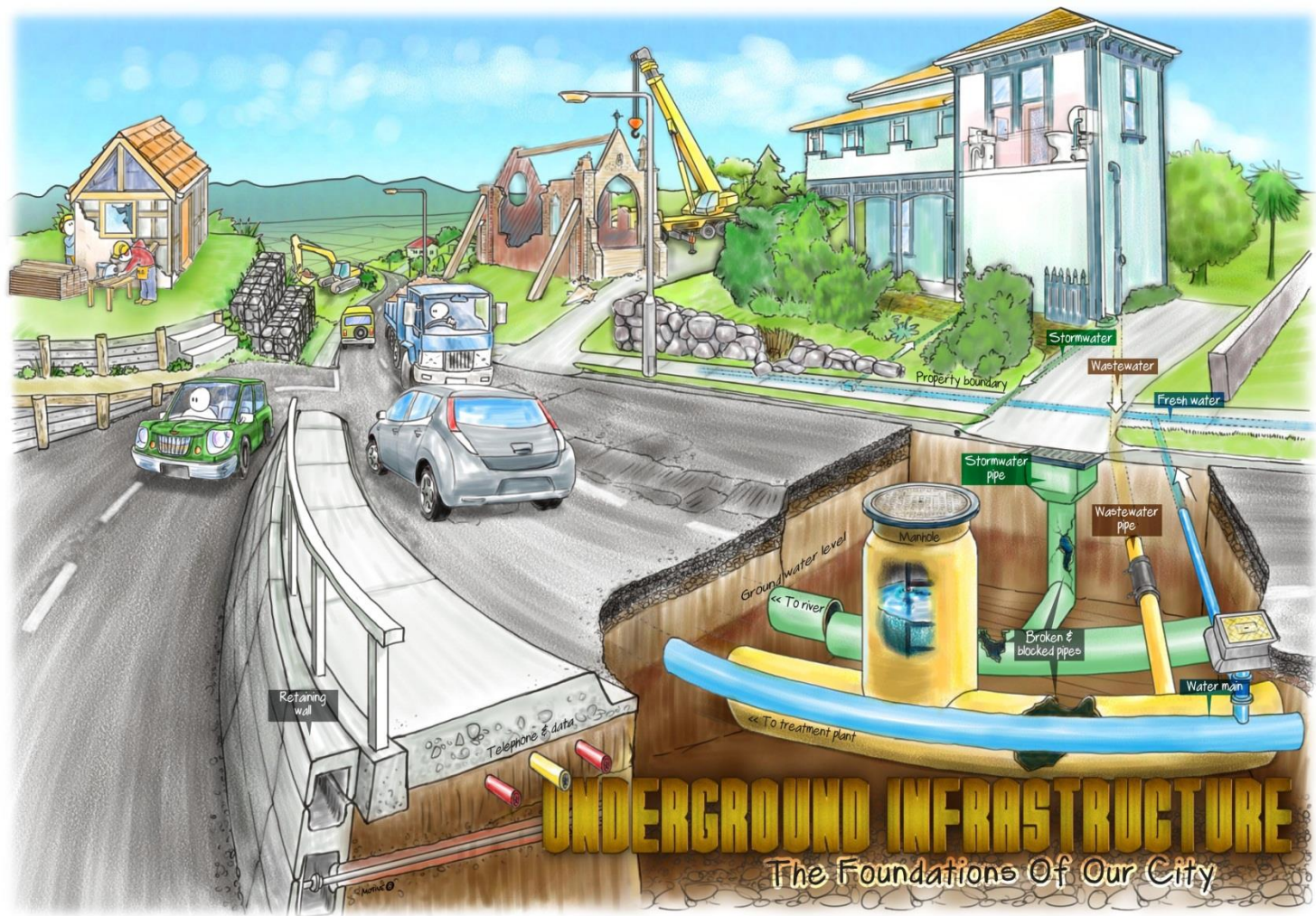
What is SCIRT here for?

- Our vision:
“To create resilient infrastructure that gives people security and confidence in the future of Christchurch”

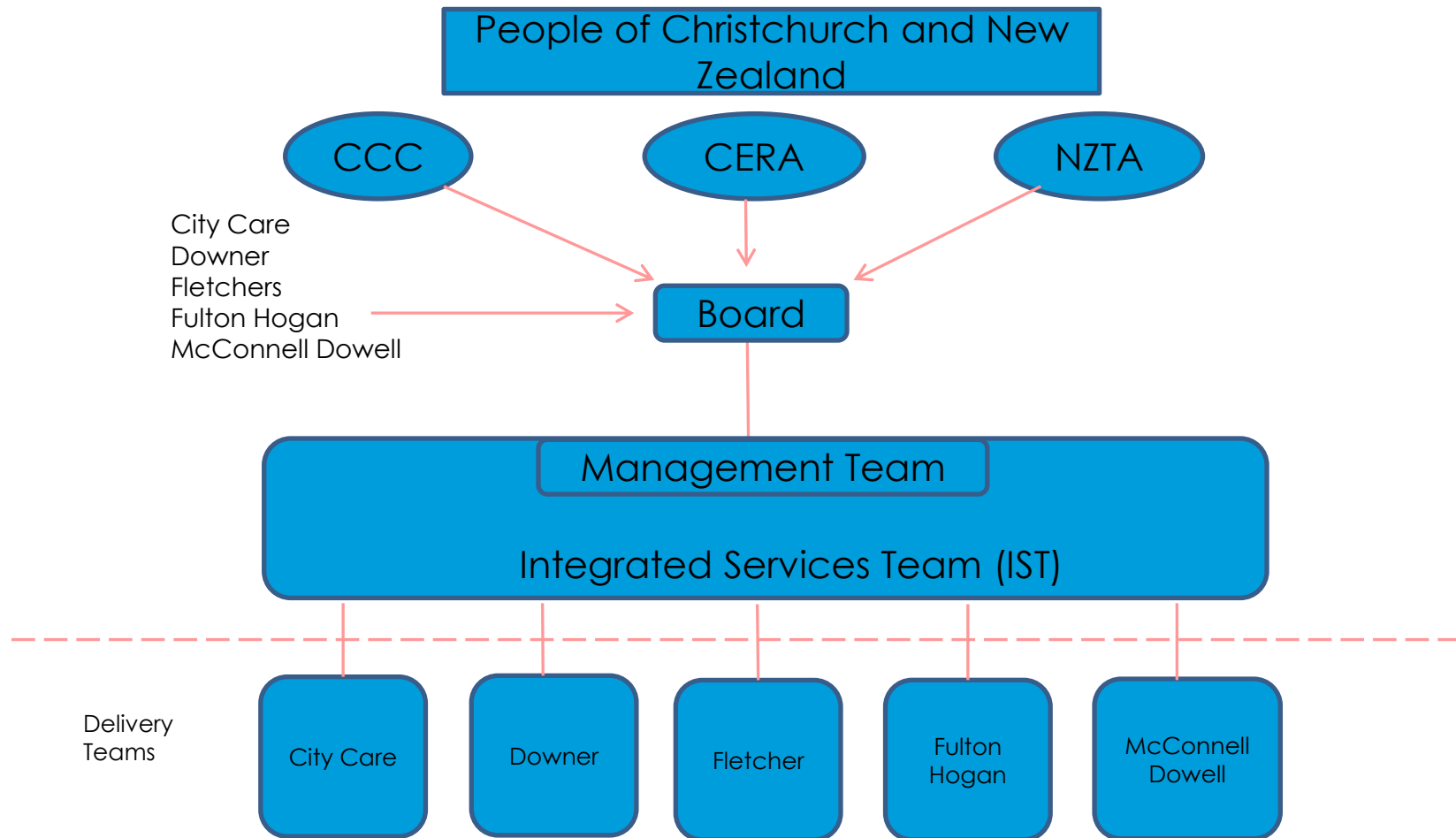
The people of Christchurch are at the heart of the rebuild

- Which earthquake-damaged infrastructure is SCIRT repairing?
 - Wastewater
 - Fresh water
 - Storm water
 - Roads (bridges and retaining walls)

New Zealand's largest ever civil engineering project







Who is SCIRT?



SCIRT's progress

Completed Work

WASTEWATER 	341 km pipe (57%) repaired/replaced
	53 pump stations (65%) repaired/replaced
STORM WATER 	33 km of pipe (42%) repaired/replaced
	4 pump stations (48%) repaired/replaced
FRESH WATER 	66 km of pipe (77%) repaired/replaced
	20 pump stations and reservoirs (69%) repaired/replaced
ROADING 	960,773 sq m of road (59%) repaired/replaced
	118 bridges/culverts (78%) repaired/replaced
	98 retaining walls (51%) repaired/replaced

91% of design is complete



66% of construction is complete



92% of Central City Work is complete



72% of the whole SCIRT programme is complete



Progress

Communication



4894 work notices distributed to 1,142,600 residents



200 e-newsletters produced



145 school visits

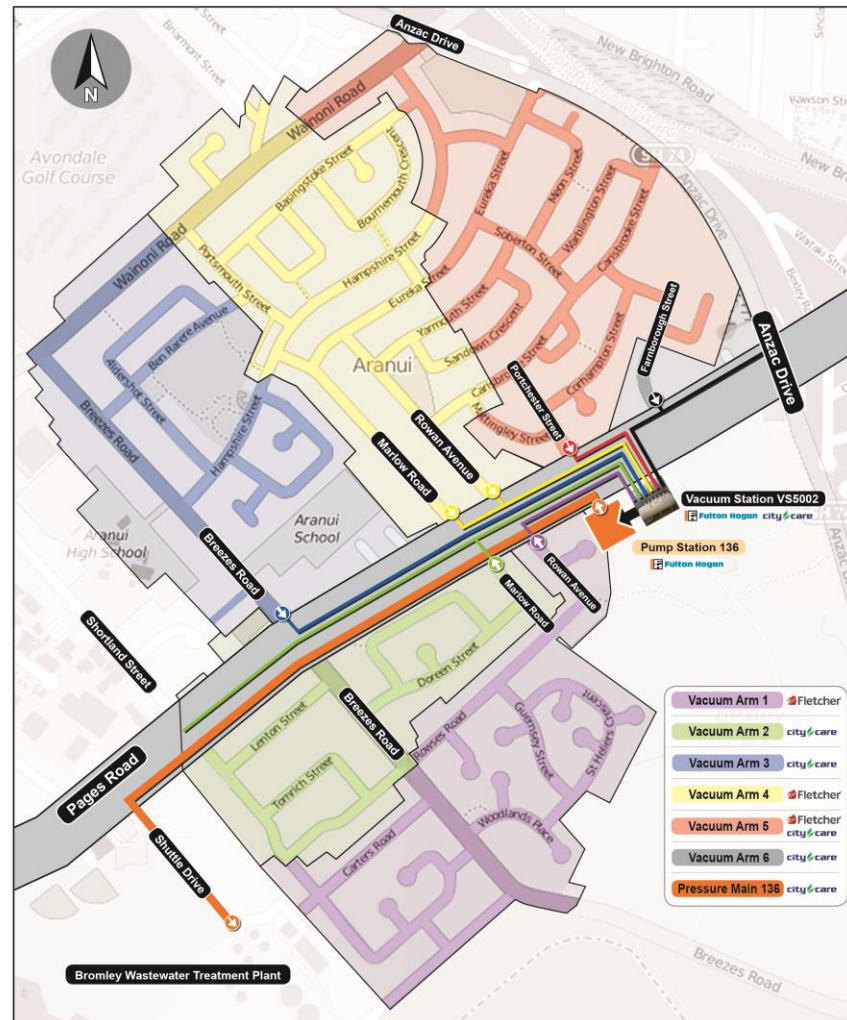


28,842 face to face meetings



4355 non-traffic related signs about our work.

Aranui vacuum wastewater network



city&care 0800 632 889 Fletcher 0800 444 919 Fulton Hogan 0800 277 3434

Aranui vacuum wastewater network



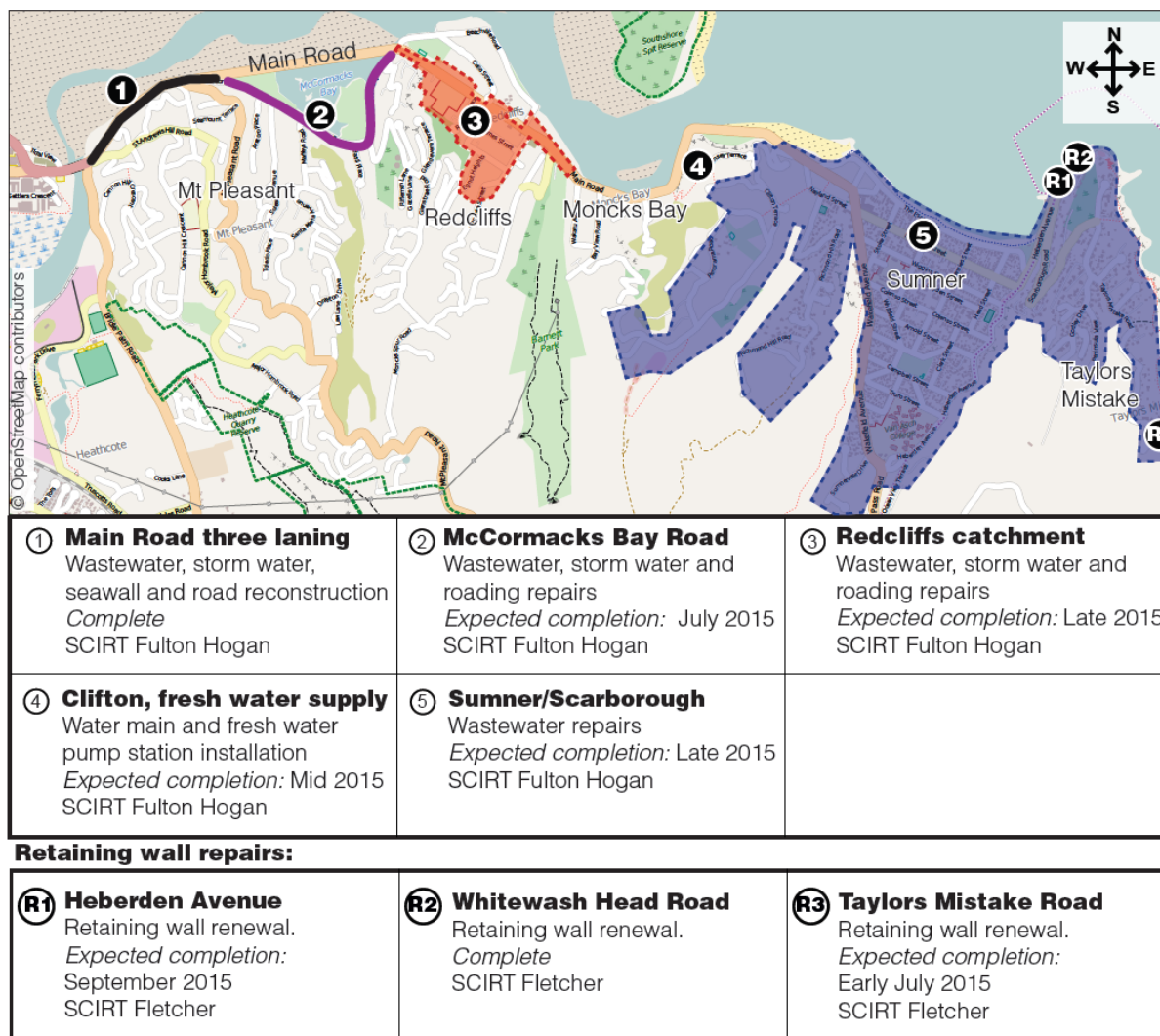
Aranui vacuum wastewater network



Southern relief wastewater repairs



Ferrymead to Sumner repairs



Main Road Sumner



Whitewash Head Road retaining wall

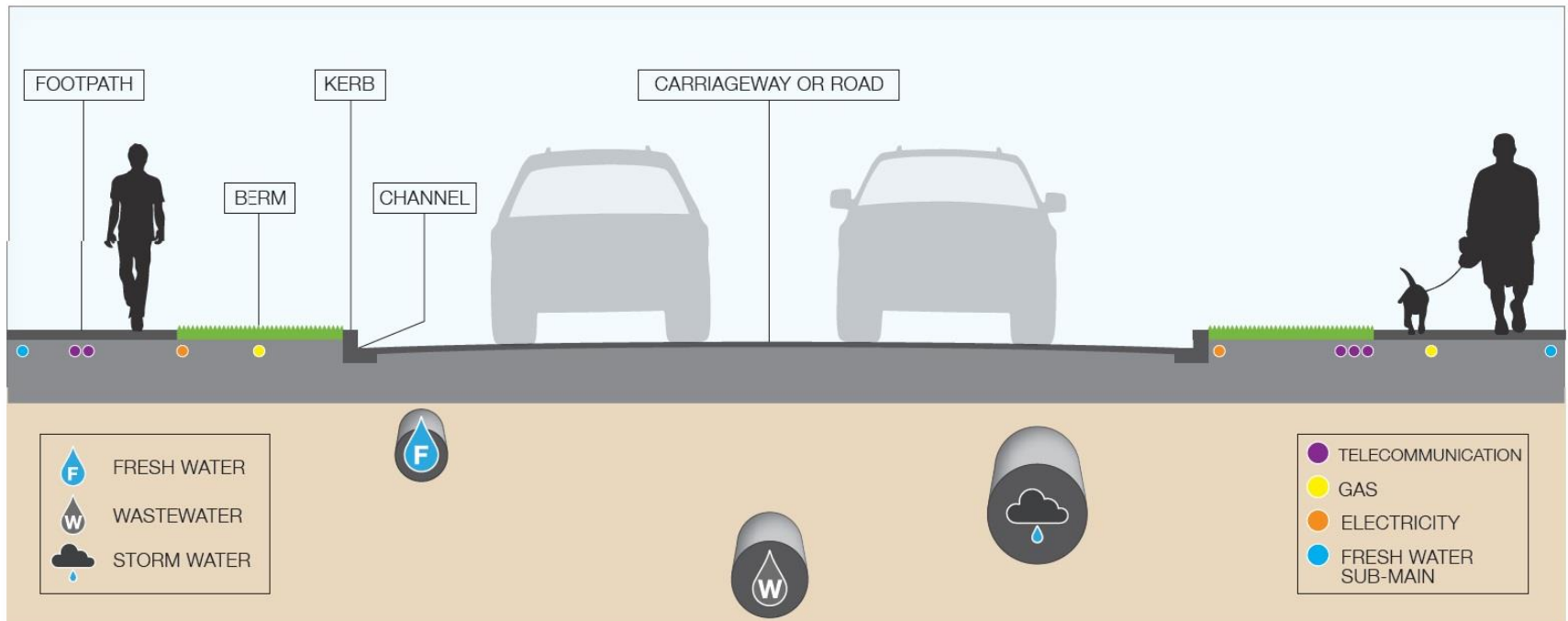


Community perceptions

- **83%** satisfaction with the job SCIRT does (up from 77% in Nov 2014)
- **95%** recognise road works are part of progress – SCIRT's work is seen as a positive sign of progress
- **81%** are confident SCIRT is doing its job well
- **89%** overall satisfaction with the information provided by SCIRT - **92%** say it was sufficient

* Results from latest six-monthly telephone survey of Christchurch people's perceptions of SCIRT. 400 people surveyed, April 2015.

Roads



Roads



Roads



Thank you!

- We appreciate your support
 - Please keep referring people to
 - our website www.strongerchristchurch.govt.nz (identifies all SCIRT projects with an 0800 number to call)
 - or the call centre 941 8999
 - Or email us info@scirt.co.nz
- Sign up for our e-newsletter
 - Comes out via email