

Lessons learned from one of New Zealand's most challenging civil engineering projects: rebuilding the earthquake damaged pipes, roads, bridges and retaining walls in the city of Christchurch 2011 - 2016.

SCIRT Safety Alert – SCIRT Critical Risk #3 powered plant and tools – first aid injury

Story: Health and Safety

Theme: Programme Management

An example of a SCIRT safety alert. Safety alerts were sent out to Delivery Team Health and Safety representatives after an incident who then sent or delivered them to subcontractors.

This document has been provided as an example of a tool that might be useful for other organisations undertaking complex disaster recovery or infrastructure rebuild programmes.

For more information about this document, visit www.scirtlearninglegacy.org.nz



This work is licensed under a [Creative Commons Attribution 3.0 New Zealand License](#).

The authors, and Stronger Christchurch Infrastructure Rebuild Team (SCIRT) have taken all reasonable care to ensure the accuracy of the information supplied in this legacy document. However, neither the authors nor SCIRT, warrant that the information contained in this legacy document will be complete or free of errors or inaccuracies. By using this legacy document you accept all liability arising from your use of it. Neither the authors nor SCIRT, will be liable for any loss or damage suffered by any person arising from the use of this legacy document, however caused.

SCIRT CRITICAL RISK #3: “Powered Plant & Tools”

First Aid Injury

WHAT HAPPENED?

On Wednesday 14th October a crew member was putting a steel frame in the pit for the pipe burster, when his hand became stuck between the steel frame and the steel plate on the burster side. This caused an injury to his fingers. Gloves were worn at the time.

WHY DID THIS HAPPEN?

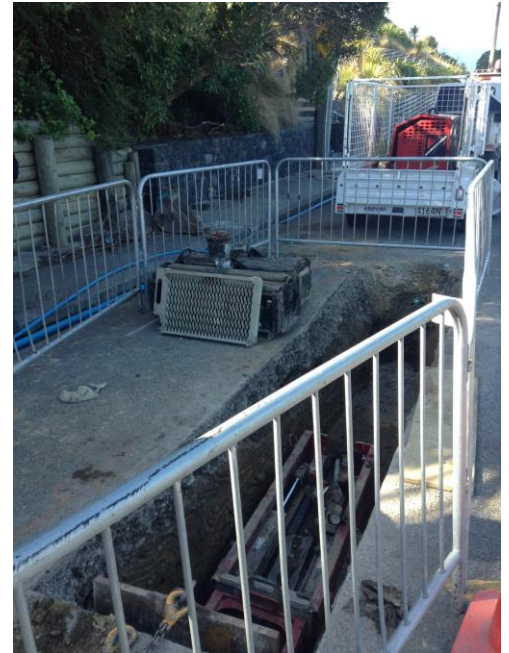
The machine was not operating at the time. The burster machine had been jacked back and the frame/spacer was lowered into the pit. The gap between the lifting lugs on the spacer and the bursting plate was not wide enough – the hand was caught by the downward motion. As the frame was lowered into the pit his fingers were caught.

PREVENTIVE ACTIONS:

- Keep all body parts away from pinch points when using equipment.
- Remove bursting plate first.

LESSONS LEARNT:

Consider what the risk is, even when completing small tasks. Following this incident, a job methodology will be written up detailing steps to prevent any repeat incident. Lifting lugs should be repositioned so pinch points are removed.



NO BULL

We don't accept excuses from our work mates for not working safely or taking short cuts.

Bursting plate

Frame of spacer

Thanks to the Fulton Hogan Delivery Team for sharing the lessons learnt!