

Lessons learned from one of New Zealand's most challenging civil engineering projects: rebuilding the earthquake damaged pipes, roads, bridges and retaining walls in the city of Christchurch 2011 - 2016.

Rebuild schedule map

Story: Project Prioritisation

Theme: Programme Management

An example of the five year rebuild schedule map created as part of prioritisation process detailing where and when construction would start. The data behind this map was updated every quarter.

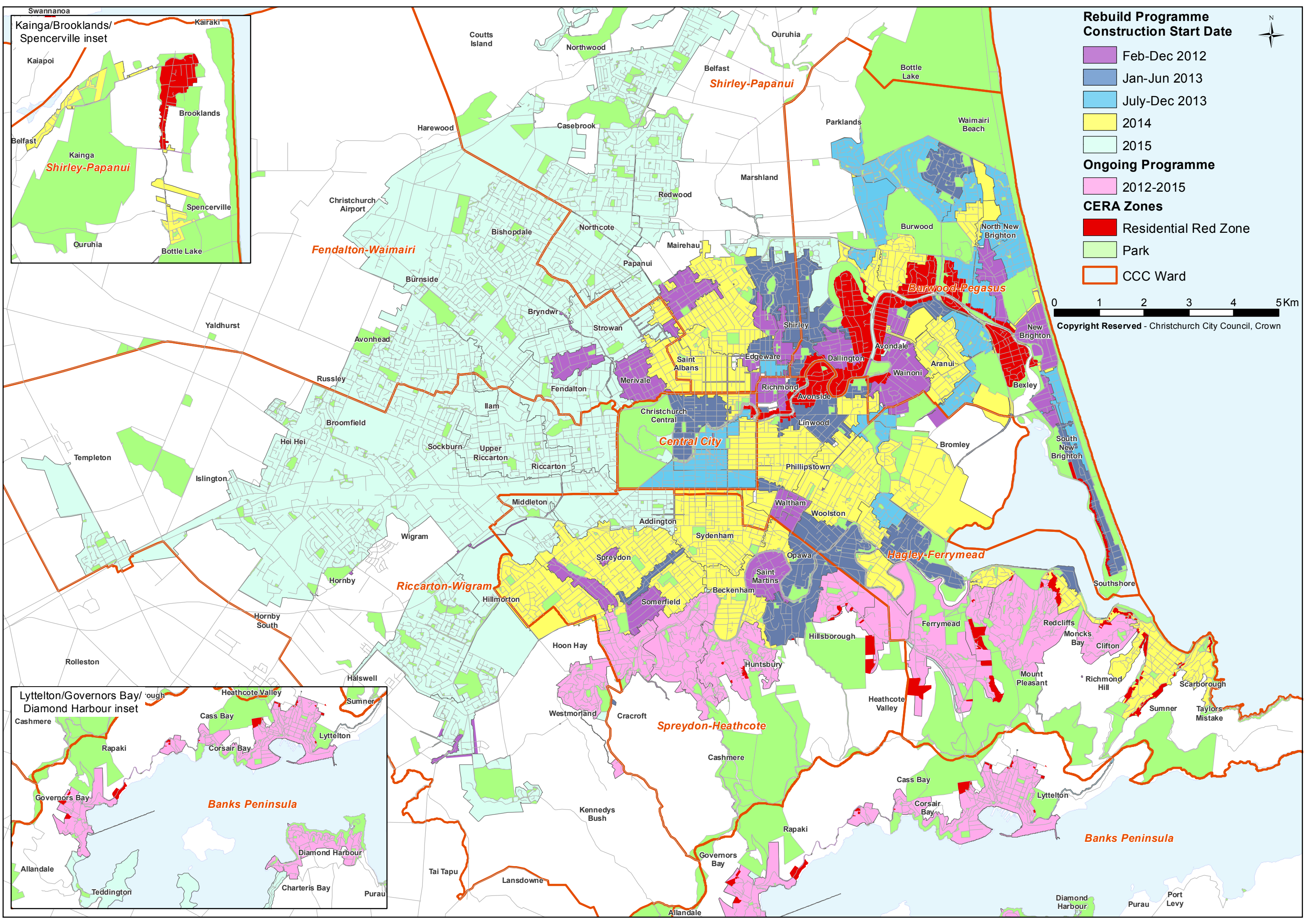
This document has been provided as an example of a tool that might be useful for other organisations undertaking complex disaster recovery or infrastructure rebuild programmes.

For more information about this document, visit www.scirtlearninglegacy.org.nz



This work is licensed under a [Creative Commons Attribution 3.0 New Zealand License](https://creativecommons.org/licenses/by/3.0/nz/).

The authors, and Stronger Christchurch Infrastructure Rebuild Team (SCIRT) have taken all reasonable care to ensure the accuracy of the information supplied in this legacy document. However, neither the authors nor SCIRT, warrant that the information contained in this legacy document will be complete or free of errors or inaccuracies. By using this legacy document you accept all liability arising from your use of it. Neither the authors nor SCIRT, will be liable for any loss or damage suffered by any person arising from the use of this legacy document, however caused.



**Rebuild Programme
Construction Start Date**

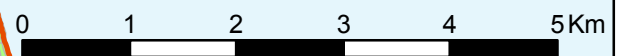
- Feb-Dec 2012
- Jan-Jun 2013
- July-Dec 2013
- 2014
- 2015

Ongoing Programme

- 2012-2015

CERA Zones

- Residential Red Zone
- Park
- CCC Ward



Copyright Reserved - Christchurch City Council, Crown

