

Lessons learned from one of New Zealand's most challenging civil engineering projects: rebuilding the earthquake damaged pipes, roads, bridges and retaining walls in the city of Christchurch 2011 - 2016.

SCIRT asset assessment request process

Story: Asset Assessment

Theme: Programme Management

A diagram which illustrates SCIRT's asset assessment request process.

This document has been provided as an example of a tool that might be useful for other organisations undertaking complex disaster recovery or infrastructure rebuild programmes.

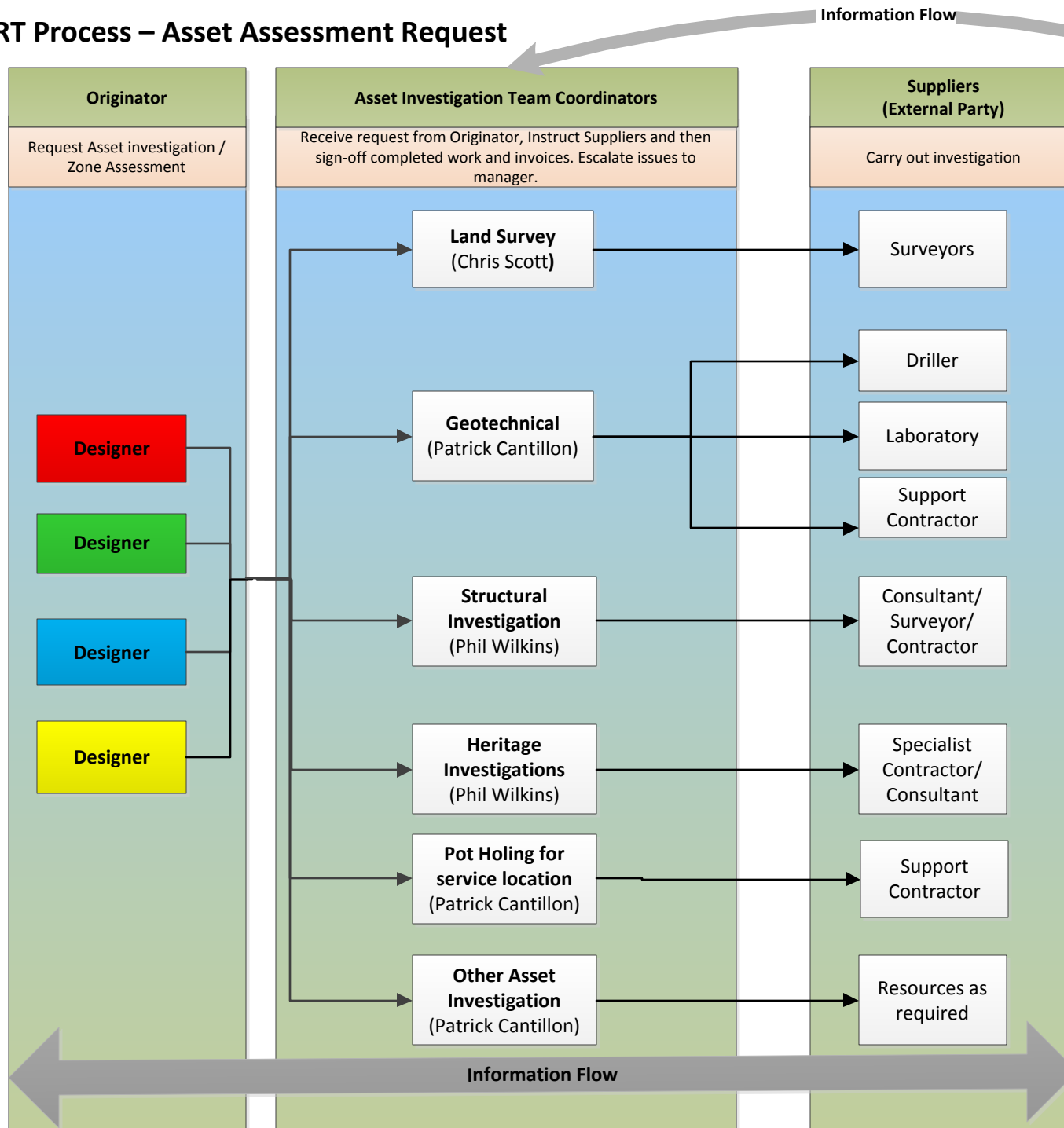
For more information about this document, visit www.scirtlearninglegacy.org.nz



This work is licensed under a [Creative Commons Attribution 3.0 New Zealand License](https://creativecommons.org/licenses/by/3.0/).

The authors, and Stronger Christchurch Infrastructure Rebuild Team (SCIRT) have taken all reasonable care to ensure the accuracy of the information supplied in this legacy document. However, neither the authors nor SCIRT, warrant that the information contained in this legacy document will be complete or free of errors or inaccuracies. By using this legacy document you accept all liability arising from your use of it. Neither the authors nor SCIRT, will be liable for any loss or damage suffered by any person arising from the use of this legacy document, however caused.

SCIRT Process – Asset Assessment Request



Stronger Christchurch
Infrastructure Rebuild

Process Owner:
Asset Investigation Manager

Last updated: 14/11/11

Version: 0.5

Author: Sonia Chaker

Contributors: Patrick Cantillon, Chris Scott, Andrew Livermore

Asset Investigation Team Lead Coordinator

Monitor progress and assist with issues

Investigation Team Lead Coordinator (Patrick Cantillon)

Requirements:

- Team Lead Coordinator must have visibility of all submitted requests
- Team Lead Coordinator must be able to view requests that are due in the next 5 working days (weekly report)
- Team Lead Coordinator must be able to view requests whose due date has past (weekly report)
- Users must be able to link 2 request forms in Project Centre
- Users must be able to request services from the Suppliers using Project Centre (either as an email to them providing that their reply is automatically added back into PC, or by giving them access to Project Centre)
- Text field required to store the asset assessment Number.
- Field required to store the **expected date** for receiving results
- System required to monitor **how long it takes for the expected date to be received.**
- System required to show the **actual date** the results were received.

Note:

- A Framework agreement is being setup with key suppliers.
- Surveyor's use Project Centre to record their hours and therefore their claims are done through the monthly SCIRT process

SCIRT Process – Asset Assessment Request

Process Owner: Asset Investigation Manager
 Author: Sonia Chaker

Last updated: 14/11/11 Version: 0.5
 Contributors: Patrick Cantillon, Chris Scott, Andrew Livermore

